

*We are*  
TOWNLEY



“  
They enjoy  
their learning  
immensely  
”

“  
Pupils’ behaviour is exemplary  
”



“  
Pupils are very proud of  
their school. They feel  
highly valued and know  
that their voices are heard  
”





“  
Pupils thrive in this  
environment of high academic  
challenge and comprehensive  
pastoral care  
”

“  
Across the  
school, pupils  
excel in their  
studies  
”





“

Pupils participate in an impressive range of activities outside their studies

”



“

Pupils are eager to learn. They listen carefully to teachers and one another. Pupils engage maturely in discussions in class, and they take pride in their work.

”

*We are*  
TOWNLEY

# Founded in 1937

# Bexley Technical High School

---

School crest from 86 years ago, with four elements:

- Greyhound
- An angled stripe which represents the A2 motorway
- A yellow flower in a meadow
- A river



The A2 was a major attraction!





The school Crest was updated dramatically to a burgundy

Shield with golden eagle or phoenix with a smaller inset with the letters BGTS to represent the new name - Bexley Technical High School for Girls.

Senior girls of Bexley Technical High School for Girls in 1947 with the headmistress, Mrs D. Collins, OBE.





TOWNLEY  
GRAMMAR SCHOOL

*From here it's possible*

---

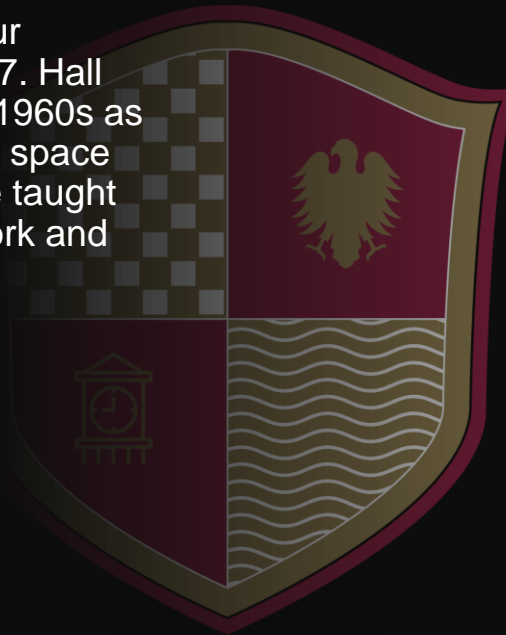
Our current school logo, using a similar colour scheme to the BTGS logo, with a new slogan added underneath.



What should the next logo represent?

# Why Chequerboard?

The Chequerboard design relates to our relationship with Hall Place built in 1537. Hall Place was used during the 1950s and 1960s as an annexe to the main school, as extra space was needed for classrooms. Girls were taught such lessons as Geography, Needlework and Music in the beautiful Tudor house.

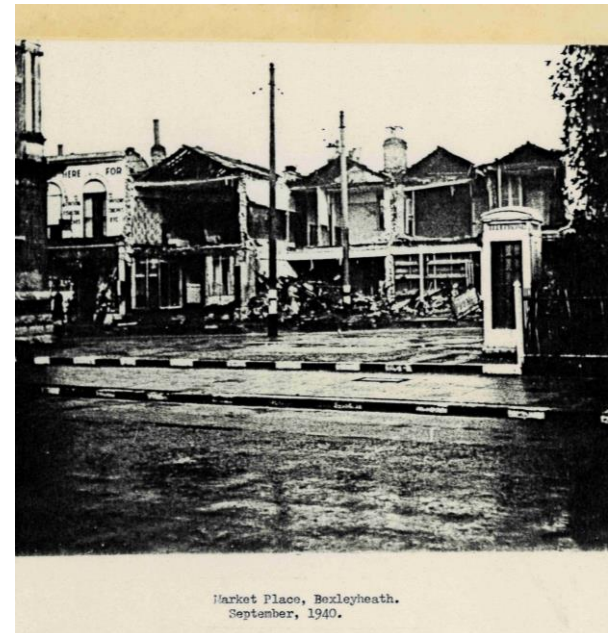
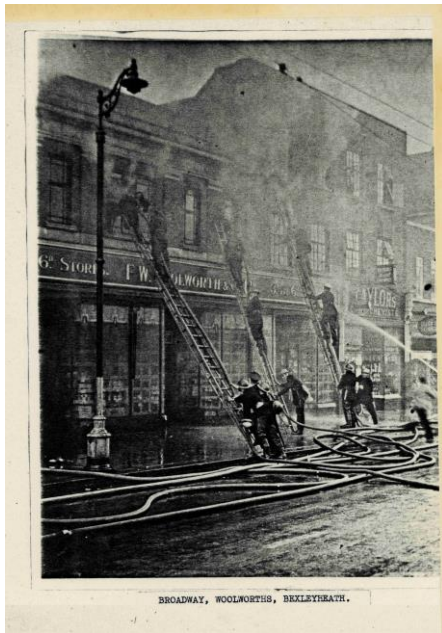


# Why waves?

The waves represent, the three main rivers in the borough, the river Cray, Shuttle and Thames.

You can see the waves on the Bexley Borough crest.

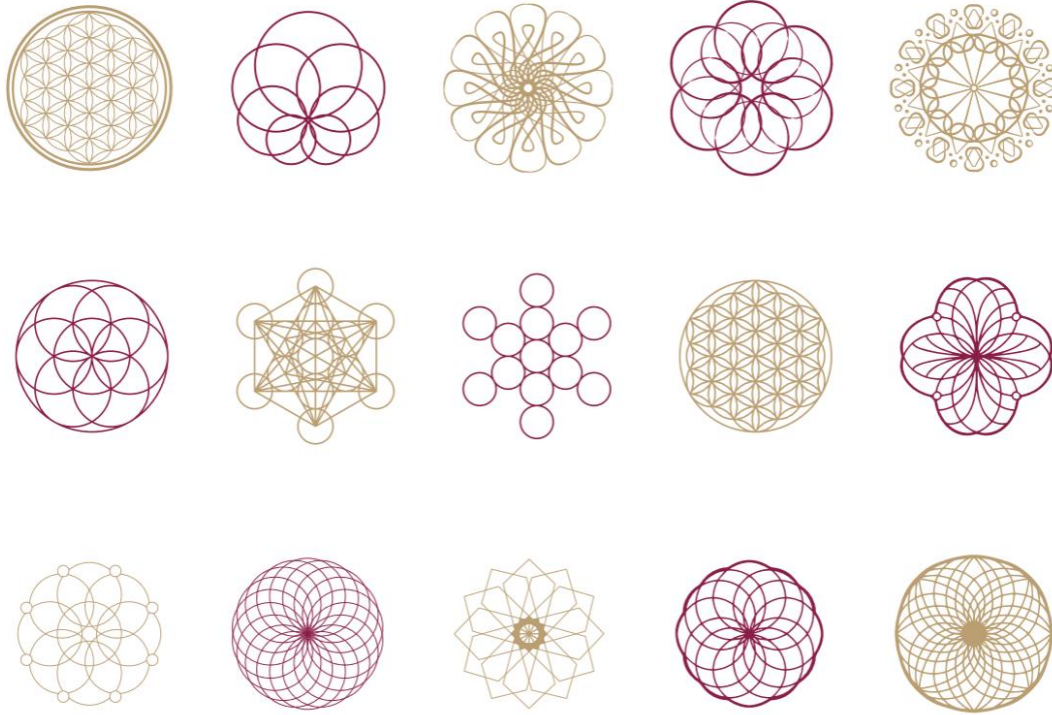




# Why a Phoenix?



The phoenix represents rebirth and new beginnings.



The flower of life is believed to be a blueprint for all life, containing the fundamental patterns for everything in the universe from the smallest atoms to the largest galaxies. It is also a representation that everything is connected.





TOWNLEY  
GRAMMAR SCHOOL

EST 1937

*From here it's possible*



TOWNLEY  
GRAMMAR SCHOOL

EST 1937

*From here it's possible*



Townley  
Grammar School

*From here it's possible*



TOWNLEY  
GRAMMAR SCHOOL

EST 1937

*From here it's possible*



TOWNLEY  
GRAMMAR SCHOOL

EST 1937

*From here it's possible*

TOWNLEY  
GRAMMAR SCHOOL





*We are*  
TOWNLEY