



TOWNLEY
— EST 1937 —
GRAMMAR SCHOOL

PROSPECTUS
2024

FOR YEAR 7 ADMISSIONS IN SEPTEMBER 2024



Welcome to Townley Grammar School

Welcome to Townley Grammar School, an academically selective and socially responsible girls' school with a co- educational Sixth Form.

Education should inspire students to become the best version of themselves and define their own path to success. Townley is defined by its ethos and culture, which is defined by the needs of our local and wider community.

Education should serve as an inspiration for students, motivating them to strive for their personal best and carve out their own individual pathways to success. At Townley, our distinct ethos and culture are inextricably linked to the needs of both our local community and broader society. Townley students learn in a stimulating environment where teachers understand how to challenge and where the range of co-curricular opportunities is vast and varied. We are an exceptional school, rated outstanding by Ofsted and highly commended by the DfE (Department for Education) for our leading-edge Character Education provision.

Character is the foundation upon which our exceptional curriculum experiences are built.

Townley students are exposed to an education that transcends conventional national curricula and educational norms, providing them with a truly exceptional learning experience.

Our values drive our decisions and actions. These values – consciousness, courage, compassion, and curiosity – are not mere words that adorn our walls, they are the essence of who we are and what we stand for. They will shape our interactions, our expectations and the very fabric of our school community as we continue to grow and strengthen.

We pride ourselves on the provision offered across all our subjects and we have long established specialisms in STEM (Science, Technology, Engineering and Mathematics) and the Arts. These specialisms further encourage our students to cultivate their creativity and curiosity alongside their academic pursuits.

Coupled with our focus on leadership, oracy and our innovative Consciousness Curriculum, Townley students are equipped to be exceptional leaders of the future.

o not travel read
only one page.”



It is our responsibility to draw out our students' talents and extend their potential and to develop their personal qualities.

Equality, Diversity, and Inclusion are pillars of our school.

We work hard to ensure that every Townley student feels a powerful sense of belonging within our community and can discuss, debate and challenge ideas within the academic and pastoral safety of our school. Our fully student led Equity Commission is committed to working with leaders and all staff to collaborate and further enhance our school community.

As a school we have strong working relationships with an exceptional range of educational organisations, industry and policy makers. We strive to continuously excel in all we do and seek expert partnerships in areas we know our students will benefit.

Outward facing in all that we do, our focus on service, leadership and character education means that Townley students leave us fully prepared for the challenges of the 21st Century.

Our bespoke 21c curriculum is a commitment to developing Townley students into confident, knowledgeable and active change agents, ready to thrive in a forever changing world. We unashamedly put the wellbeing of our girls on an equal footing with their academic achievements and we are proud to develop intellectually curious, self-motivated and enthusiastic young women.

Our behavioural and pastoral systems are aligned with the best in academic research and practice; our approach is student centric, combining the need for exceptional relationships with the certainty and stability of transparent, fair systems.

We run a comprehensive leadership programme for students which sees them gain confidence, understand leadership styles and equips them to speak in public.

Our KS3 International relations programme and exciting new Townley Baccalaureate is continually growing and developing to provide students with the opportunity to further develop academically.

Our innovative curriculum embeds global perspectives, whilst exciting links with partner schools across the world facilitate opportunities for a wide array of international trips. Our international connections originate from our endeavour to embrace diversity and difference.

Through our enlightened curricular and pioneering symposium model, our students learn to challenge and question as well as to listen to alternative views.

With such an education our girls have a duty to grow into young women who desire to improve the world for others, becoming the very catalyst for change they envision.

I look forward to welcoming you to Townley.

Nevita Pandya
Headteacher

Our Values

Consciousness reminds us to be aware of our choices and their consequences. It encourages us to consider the broader impact of our actions, both on our immediate surroundings and the world at large.

Compassion is our guiding principle, urging us to show kindness, empathy, and understanding towards one another. Compassion is the heartbeat of our community; it encourages us to lift one another up.

Courage is the inner strength that propels us to take on challenges and to stand up for what we believe in. Courage is our companion as we navigate the unknown.

Curiosity fuels our thirst for knowledge and understanding. It encourages us to question, to explore, and to never stop seeking answers.



Consciousness

Exploring Minds,
Igniting Awareness



Courage

Kind Heart, Fierce Mind,
Brave Spirit



Compassion

Nurturing Hearts,
Uniting Lives



Curiosity

Enquire, Envision,
Empower



The Curriculum

We provide a bold and inspiring curriculum rooted not just in academic excellence, rigour and challenge but underpinned with exceptional opportunity. Throughout their curriculum journey, the sense of purpose within our students is ignited and nurtured to ensure they leave us not only with unrivalled knowledge, independent thought and insatiable curiosity, but also the aspirational qualities that will change society for the better. Townley students achieve excellently in public examinations, our vision is to develop the confidence and consciousness necessary to flourish in their future lives, for students to be the definers of their success, not passive recipients of grades.

Interdisciplinary in its very nature, stimulates light bulb moments and creative connection making. Our Townley curriculum joins academic and emotional intelligence in equal measure, and weaves into many aspects of school life, in the classrooms to the lecture theatre, and through clubs and events, including those with our wider local and global communities.

Key Stage 3

All students follow a balanced curriculum including a 21c session and a Character and Wellbeing lesson. There are minor variations to the curriculum from year to year to ensure a fair balance between subjects over the Key Stages and to reflect any changes at National level.

Year 7: Most subjects are taught in tutor groups with some of the practical subjects being taught in smaller mixed groups. Students study French, German or Spanish as their Language option and also study Latin & Sustainable Leadership as part of their Enrichment programme.

Year 8: In addition to the Modern Foreign Language studied in Year 7, students begin a second Modern Foreign Language, continue with Latin or study International Relations and Leadership.

Year 9: Students are now set for Mathematics across half a year group and they select their GCSE option subjects. The Year 9 curriculum fully prepares students for the start of Key Stage 4 through its enriching programme that develops key skills and knowledge.

Consciousness curriculum

All students have one lesson a fortnight for the Consciousness curriculum, an innovative programme designed to empower our students with the ability to develop into the best version of themselves, understand their own potential, their place in society and the transformative impact they can have on it. Our vision for this curriculum is rooted in our school values. This bespoke programme has been developed in collaboration with experts in the field of wellbeing and character, such as Sir Anthony Seldon.

Key Stage 4

All students continue with 21c and CWB sessions alongside the main curriculum. All students take English, Mathematics, Science, RS and PE as compulsory subjects. They must also continue with at least one of the Languages they have taken at Key Stage 3. Students then have a choice of three option subjects.

Current option choices are Art, Classical Civilisation, Computer Science, Dance, Design Technology, Drama, Engineering, Geography, History, Latin, Music and Physical Education.

Key Stage 5

All students continue with 21c and CWB sessions alongside their A-Levels. Currently, students in the Sixth Form take 3 or 4 A Levels through to the Upper Sixth. Students can participate in standard courses alongside the Extended Project Qualification and Elective programme to ensure a broad and balanced curriculum. A full list of subjects offered appears in the Sixth Form brochure, which is updated annually, and can also be found on the school website.

Google for Education

Townley Chromebook Scheme

We are delighted to have a Chromebook scheme at Townley Grammar School, an exciting project destined to take our students' learning experience to a new level.

We believe using Chromebooks will enable our pupils to become well-informed, responsible digital citizens and lifelong learners. It is our vision that every student will have access to and own a Chromebook. Our students' daily lives are filled with technology and they are quick to embrace new developments. We want our students to feel at ease in this rapidly changing climate, and make sure they are ready for real world opportunities.

Once our students have access to their own devices, we firmly believe the new scheme will bring enormous educational benefits, and hope parents will get behind this ground-breaking initiative.

A balanced combination of school and home learning is crucial to the future success of young people, and technology opens the door to a new and engaging world that extends



effective study way beyond the confines of the classroom. Chromebooks and Google Apps for Education will give our students ready access to information wherever they are, whenever they like. Chromebooks will supplement the existing learning strategies at Townley Grammar, letting pupils study safely, effectively and productively. We understand that mobile phones may

feature prominently in people's lives but we firmly believe that there is no place for them in an educational setting. UNESCO, the UN's education, science and culture agency, said there was evidence that excessive mobile phone use was linked to reduced educational performance and that high levels of screen time had a negative effect on children's emotional stability. As a result of our wider commitment to supporting the wellbeing of our students, we do not permit KS3 students to bring a smartphone to school. If they require a phone, it should be a non-smartphone and left in the lockers throughout the day.

The House System

At Townley, each tutor group is placed into a 'House' that is represented by a Greek goddess with positive traits to emulate. Our House System provides a cohesive community rooted in house values that allows students to take part in a range of inter-year group and co-curricular activities that complement and enhance their overall character educational experience.

Student leadership is central to the House system, with a House Captain and Vice House Captain in each tutor group and two Year 12 students who lead their whole house from Years 7-13. Recent innovations have included a House Bake-Off, 6th Form Quizzes and Games. The Senior House Captains lead assemblies with their houses at least once a term and represent their houses at the final assembly of the year when the House Cup is awarded to the House that has accrued the most House points from all House activities and individual points. Students also select the charity that their House supports and raise money for throughout the year.

The House Council is the main vehicle for student voice, and social action, within the school. The aim of the Council is to meet at least twice every half term and enact real change within the school community. The focus for this year is to work on our CanTeam project providing meals for families, to write 'Spotlight' articles about members of our school community and to lead our Food Bank drive.





Townley 21c

Townley 21c Rationale

21c is a facet of the curriculum seeking to give students opportunities to develop their creativity, critical thinking and oracy skills - whilst creating a space to share ideas, practice disciplined dialogue and build relationships founded on an appreciation of multiplicity of opinions. The aim is to empower students to imagine new possibilities rather than follow established paths and author future narratives rather than uncritically abide by the status quo.

The vision is for our students to:

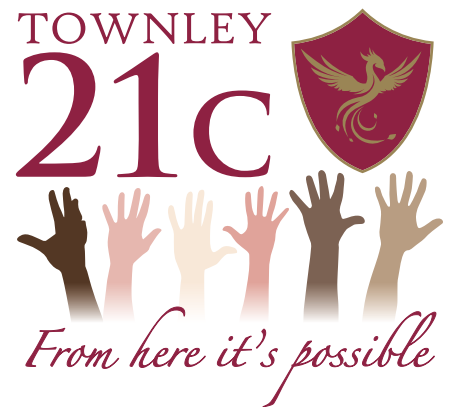
- Explore and question existing ideas
- Communicate clearly and creatively
- Engage with the 21st century's emergent opportunities

21c Sessions & Townley Symposiums

The 21c journey will provide students with an additional breadth of knowledge and holistic opportunities that further enrich their educational experience and provide a unique, bespoke experience for Townley students.

Students will be given the opportunity to showcase what they have discovered over the course of each 21c topic. The form and format of their response to the topic is not pre-determined, encouraging them to bring their passions and creativity to the formulation and presentation of their responses.

21c sessions are about **sparkling curiosity** and **encouraging exploration**. **21c is built around 21 questions** we invite our students to engage with over the duration of their journey at Townley. These are formulated around **three key themes** emergent from the changes, challenges, and opportunities of the 21st century.



95% Go to university

53% Go to Russell Group

69% Get first choice university

4% Gone on to study Medicine*

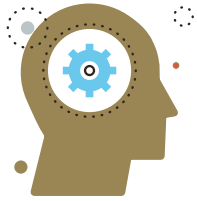
*Including Dentistry and Veterinary Medicine





Townley 21c

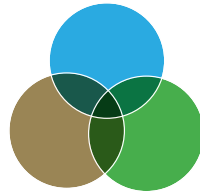
21c Aptitudes



Critical Thinking:
Looking at problems in a new way and linking across subjects and disciplines.



Communication:
Sharing thoughts, questions and ideas.



Collaboration:
Working together to reach a goal.

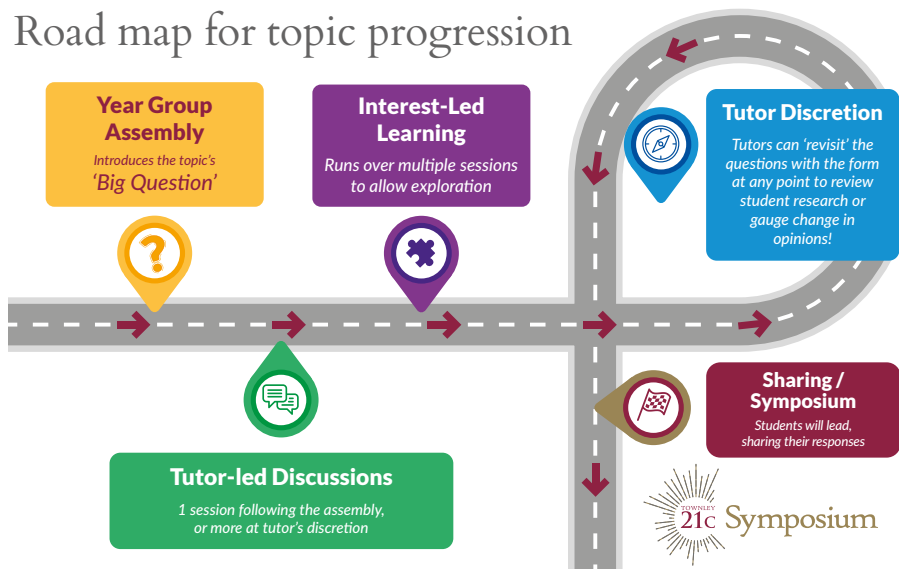


Creativity: Trying new approaches to get things done in an innovative and inventive manner.



Each year, every year group is challenged with three Big Questions (one per theme), which are the core of a topic, with each topic progressing as follows:

Road map for topic progression



**A2
RESULTS**

A*-A

Grades: 43%

A*-B

Grades: 65%

A*-C

Grades: 86%

Equality, Diversity & Inclusion

Townley Grammar School is proud of our diversity and our ongoing journey to empower our students through education and care. We celebrate the courage, social conscience and resilience of our students whose voices advocate for positive, systemic change. We work to ensure that all students feel valued and safe in our school. We want our students to feel a strong sense of belonging and able to express their identity openly and proudly. It is our intention to ensure students feel empowered to positively own their identity. In order to further enhance our students' knowledge of the diverse community we find ourselves in and to help students understand their place and role in the rich tapestry that is our world, we continuously strive to ensure our curriculum is innovative, knowledge rich and inclusive.





TOWNLEY
— EST 1937 —
GRAMMAR SCHOOL

TOWNLEY BEHAVIOUR TRAITS

Students should endeavour to show these traits at all times



Responsibility

Being aware that alongside our rights we also should behave in a manner that is responsible and takes into account the needs of all our community



Listening

Actively giving someone the time to express their thoughts and listening to them respectfully



Respect

Treating people with dignity, respecting their person



Empathy

Putting yourself in other people's shoes and acting accordingly



Kindness

Treating and speaking to people how you wish to be treated.



Bravery

Not simply doing what may be easy or popular, taking your own decisions and being accountable to yourself as well as others



Perseverance

Not giving up and keeping focused on our goals



Honesty

Acting with integrity and doing the right thing when no one is looking.
Being honest with yourself and others

School Day

The school day begins at 8.30am and ends at 3.30pm (Tuesday - Friday & 8.30am - 2.35pm on Mondays). During a school week twenty five hours are spent in lessons excluding Assembly, break and lunch.

Monday

8.30am - 8.45am: .. Registration
8.45am - 9.30am: Period 1
9.35am - 10.20am: Period 2
10.20am - 10.40am:Break
10.40am - 11.25am: Period 3
11.30am - 12.15pm: Period 4
12.15pm - 1.00pm:Lunch
1.00pm - 1.45pm: Period 5
1.50pm - 2.35pm: Period 6

Tuesday - Friday

8.30am - 9.05am: Registration/21c/CWB
9.05am - 9.55am:Period 1
10.00am - 10.50am:Period 2
10.50am - 11.10am:Break
11.10am - 12.00pm:Period 3
12.05pm - 12.55pm:Period 4
12.55pm - 1.45pm:Lunch
1.45pm - 2.35pm:Period 5
2.40pm - 3.30pm:Period 6

GCSE RESULTS

100%

Percentage of Pupils in Year 11
gaining 5+ GCSE Passes

7.5

Average GCSE points score

68%

Of the GCSE grades
were at 9 to 7

Behaviour & Culture

Relationships are central to exceptional behaviour for learning. We live in a school community and must respect each other's dignity, working together for a common purpose: to create a happy, safe, ambitious, and successful learning environment where we see and treat each other as an extension of ourselves.

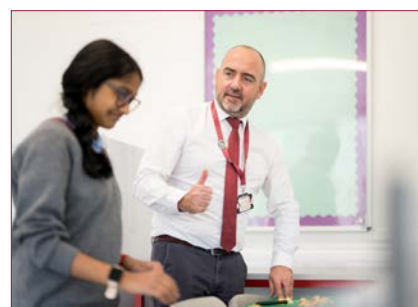
Creating a framework in which the behaviours needed for that kind of community to flourish involves a strong focus on pre-emptive systems, rewards, and certainty of consequences. To support the development of behaviour and helping young people to overcome the challenges they find in meeting those standards to flourish we will provide a variety of forms of support.

All members of our school community should actively exhibit and promote through their behaviours the following key behaviour for learning; Ready to learn and take on the opportunities of the day, being respectful, and feeling safe. There are examples of other Townley traits and learning behaviours we can use to further reward our students

Our ethos and guiding purpose is to ensure all our students feel a strong sense of belonging within our school community and develop the character

to be the change they want to see in the world during and after their time at Townley. Both of these aims are two parts of the same helix and are key school priorities. Equality, Diversity and Inclusion are areas we are further enhancing through student leadership and student support. The Townley Equity Commission, led by senior students and created by students is the main student vehicle for change development. Alongside this, our new student hub is supported by Active Horizons, a local charity set up to support students in relation to race issues.

Character education is an enabler and spans across subject areas as well as the beyond classroom experiences of our students. Youth social action, charity work, debating, The House System are all areas where character is actively developed. In 2016, Townley was Highly Commended by the DfE for its character education programme and since then we have advised and partnered with a range of organisations whilst growing our own provision.





TOWNLEY
— EST 1937 —
GRAMMAR SCHOOL

TOWNLEY BEHAVIOUR EXPECTATIONS 2023-2024

We are ready to learn:

- We arrive on time.
- Fully equipped.
- Adopt the positive mindset to seize the opportunities of lessons and do not let anything get in the way of ours and other people's learning.

We are respectful:

- We listen to each other and if we disagree, we disagree with respect for the other person's position. We do not take to social media or messaging services to "deal" with an issue. This is a direct contravention of another person's human right to privacy.
- We care for all our community through our actions and choices.
- We care for our environment and our surroundings.

We are safe:

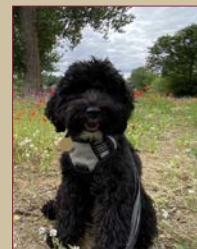
- We are never verbally or physically unkind to each other.
- We tell people and seek help when needed in order to resolve problems- we deal direct.
- We make sure we are in the right place at the right time, eg: Tutor time and lessons.

Pastoral Provision

Pastoral care is a priority at Townley and we are wholly committed to ensuring that all students are able to flourish both within and beyond school. The positive relationships forged between students, staff and parents/carers have proved fundamental to the success of our pastoral care. The robust system and support structures in place ensure that the Townley journey nurtures all students' talents and interests and provides support as students navigate through the highs and lows of life. Our Character and wellbeing programme ensures all students are equipped with the tools needed to thrive, ensuring they become the best versions of themselves, are able to make wise, safe and healthy choices in life and have the resilience and courage to thrive in the face of adversity. The range of opportunities offered to students at Townley enables them to make positive contributions to the school and wider communities and helps develop their confidence and sense of independence.

Dot

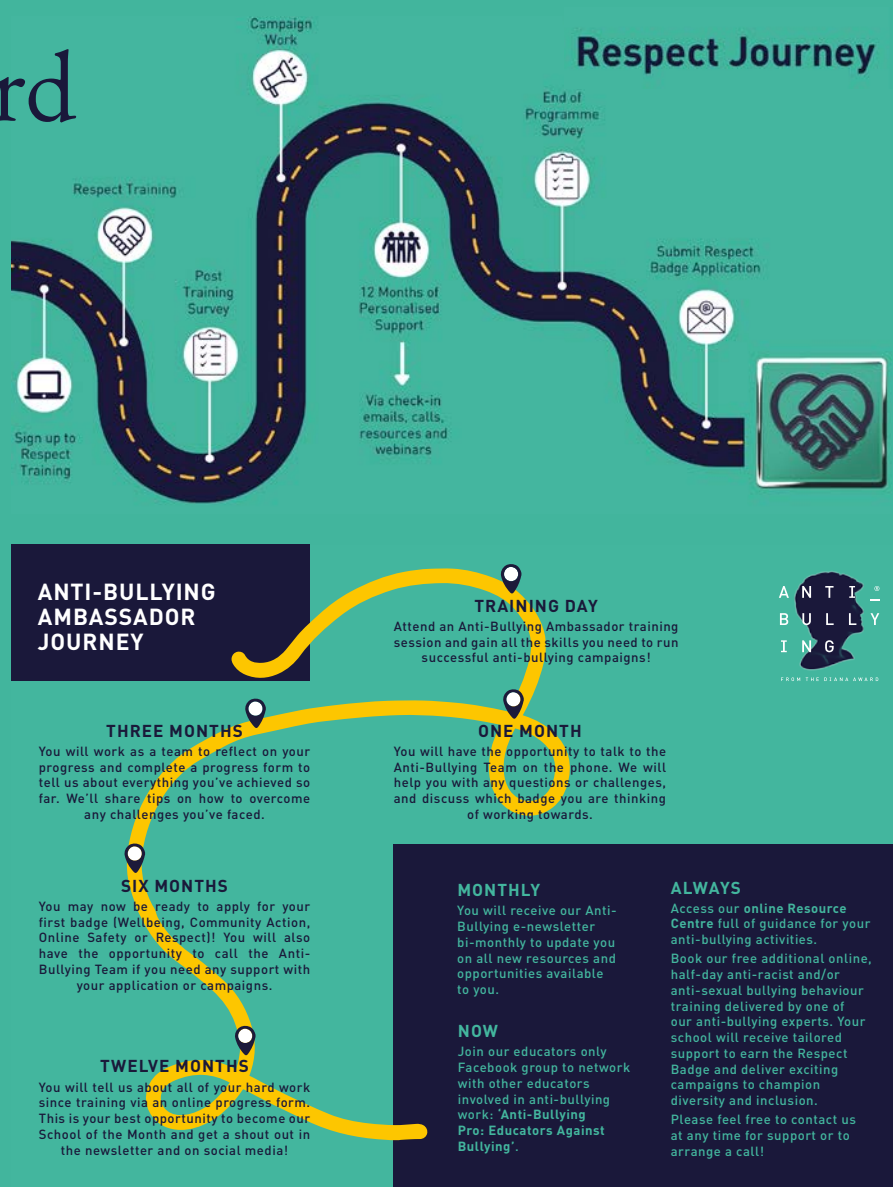
The school has invested in Dot, our therapy dog. Dot is in most days of the school week and will give students, who are feeling stressed or anxious, additional support.



Diana Award

Every year the Diana Award offers training to students so they can join the existing team of Anti Bullying Ambassadors at Townley. The Diana Award's Anti-Bullying Ambassador Programme sees trainers working with students to change the attitude surrounding bullying, opening an important dialogue about the importance of kindness and consideration of others. The programme has a strong peer-to-peer focus, with trainers giving young people the skills and confidence to become Anti-Bullying Ambassadors to tackle bullying in their schools long after the training has finished. The Diana Award's anti-bullying work is recognised as world-class thanks to this sustainable approach.

In addition, the Diana Award offers the opportunity to be involved in the Anti-Racist training. Students will network with other passionate young people, exchange ideas and share good practice, allowing students to play a vital role in developing Townley Grammar School's Anti-Racist Bullying work and allow students to creatively explore and understand the topic of racist bullying.





Our Sixth Form

The Sixth Form offers a wide range of subjects and courses, leading to unique programmes of study. Most students choose to pursue their studies at this level. Most students take a combination of three or four subjects in the Sixth Form. Additionally, students can take the EPQ, which allows them to combine their A levels with an extension project to add qualifications to their portfolio.

Townley Grammar wants to provide students with an education that allows them to go beyond the curriculum, providing a bespoke experience and preparing them for their future.

We offer various electives that will deepen their knowledge, enhance their educational experience, and ultimately enable them to become change-makers for a better future. Electives range from yoga to UKCAT and BMAT preparation, all the way to public speaking and games development.

The results have continued to rise, enabling our students to pursue the higher education route of their choice.

Destinations

A Level Leavers

Going to University/College:.... 95%
Apprenticeships: 4%
Gap Year:..... 5%

Numbers studying:

Oxbridge: 3.4%
Medicine: 5.8%



Leadership

Townley prides itself in the many Leadership opportunities provided for our students. Whether in Year 7 or the Upper Sixth, there is always something our students can become involved in. From Years 7 to 11, students can become Form Captains, Sports Captains, Global Scholars, Mental Health Champions, STEM Leaders and many more.

All Year 7 students embark upon their leadership journey through Townley Grammar School's Sustainable Leadership Course - designed in partnership with Future Foundations and Wellington College—one 50-minute session per week – culminating in the Residential Leadership trip in July.

When students reach the Sixth Form, they can become Senior House Captains, Form Prefects, Subject Scholars, Cluster Scholars, Mental Health Champions, Mentors, Senior Prefects, or Senior Officers. All these roles allow our students to develop their leadership skills and have a broader role in the school.

As well as Leadership roles, students can participate in our Townley Leadership Programme in the Lower Sixth and actively become involved in improving and supporting the wider school community through their chosen legacy projects.

“

Pupils feel proud
of their school.
They feel highly
valued and know
that their voices
are heard.

”





TOWNLEY GRAMMAR SCHOOL

EST 1937

LEADERSHIP JOURNEY





STEM

TOWNLEY *Shake Up*
stem

SCIENCE | TECHNOLOGY | ENGINEERING | MATHS



Science, Technology, Engineering and Mathematics (STEM) education plays a vital role in equipping young people with the knowledge and skills needed to participate in and contribute to society. STEM subjects have permeated every aspect of our lives; providing both opportunities and challenges. For young people, STEM opens doors to a rich diversity of opportunities, which can improve the quality of people's everyday lives and find solutions to global challenges, such as sustainable economic development.

Recent research highlights the shortfall in the number of people, especially girls, choosing to study STEM subjects, as well as the need to double the supply of skilled workers in STEM-related industries in the next seven to ten years. An important aspect is the issue of gender and ethnicity imbalance in the supply.

Hence at Townley, we have a diverse and dynamic STEM enrichment program which aims to both enthuse and excite students about the vital role STEM plays in our everyday lives; as well as provide clear insights into the possible career routes open for them.

Each Year group at Townley has their own STEM Day; designed and developed to include a variety of experiences from practical workshops to panel discussions with industry professionals.

We also celebrate British Science Week every March.



“Leaders have designed a curriculum that is academically challenging.”



Religious Education and Collective Worship

Students in Years 7, 8 & 9 have two lessons a week. All students study full course GCSE culminating at the end of Year 11 with certification and follow the WJEC syllabus. Daily Collective Worship is a statutory requirement and takes place in the context of an assembly.

Students may withdraw from both Religious Education and Collective Worship at their parents/carers' request. They are asked to put this request in writing to the Headteacher. Further details about Religious Education and Collective Worship can be obtained from the Headteacher.



Inclusion & Support

Special Educational Needs & Disabilities

TOWNLEY
EST 1937
GRAMMAR SCHOOLTGIS Inclusion
& Support

Our commitment to Special Educational Needs and Disabilities:

Townley Grammar School is dedicated to providing a high-quality education for all students, including those with special educational needs and disabilities (SEND). Every student deserves a comprehensive and well-rounded academic and social curriculum that challenges them to reach their full potential. It is important to note that our support plans are designed to address barriers to learning rather than focusing solely on a diagnosis of need or disability. By adopting this approach, we can support students during the early stages of identifying the best strategies to investigate their educational needs. We are committed to working closely with parents/carers, external agencies, and, most importantly, the students themselves to develop and implement support plans that reflect the needs and perspectives of all involved.

At Townley Grammar School, our commitment to inclusive education goes beyond 'outstanding' provision for all students. We strive to ensure that students, including students with SEND, are empowered to participate in all school activities. We work diligently to reduce barriers to engagement, wellbeing and progress by implementing the SEND Code of Practice (2015). We are further guided by

the Local Authority's Quality First Teaching framework (Bexley Quality First Teaching and SEN Toolkit: <https://www.bexleylocaloffer.uk/Services/5419>). When there is a need, we are dedicated to using our "best endeavours" to secure additional and differentiated special educational provision that complements our curriculum.

Our approach to SEND encompasses four broad areas of need:

- Communication and interaction
- Cognition and learning
- Social, emotional, and mental health
- Sensory/physical.

If you believe that your child may have a particular barrier to wellbeing, engagement and/or progress, please contact our dedicated SENCo. We value and encourage the active involvement of parents/carers throughout the process of identifying barriers to wellbeing, engagement and/or progress by creating, implementing and reviewing personalised support plans that prioritise a student-centred approach. We are here to support you and your child every step of the way.



Attendance and Punctuality

The Student Hub and Pastoral team monitor students' attendance and punctuality, identifying individuals who may need strategies to improve their record in these areas. Parents/Carers will be contacted by the Attendance Officer to discuss reasons for absence and/or lateness, and if improvement fails to materialise, parents/carers will be invited into the school for a meeting with relevant staff.

The relationship between student attendance, student progress and level of attainment is well understood. As the absence rises, so does the impact on pupil performance and their ability to sustain educational improvement, motivation and a sense of worth. Parents/Carers have a responsibility to ensure their children attend school regularly and we have a duty to put in place appropriate mechanisms to support and impose regular attendance.

Attendance is monitored on a daily basis through the House and class registration system. Parents/Carers are contacted as soon as possible if a student is absent without explanation.

A student's attendance is expected not to fall below 95% and Townley works closely with the South East Attendance Advisory Service (SEAAS) to ensure a resolution to persistent absence and address any concerns.

The SEAAS Officer visits the school on a fortnightly basis and if your daughter has difficulty in attending regularly she will visit you in your home. The SEAAS Officer is available to give advice on school-related problems to parents/carers and can offer support where appropriate.

Students are expected to arrive at school on time and punctuality to school is monitored by the Student Hub. If the student does arrive late in the morning after registers close, they must go to Student Hub to sign in. If lateness continues it is followed up with the student and Parent/Carers to ensure that appropriate support is offered.

Medical appointments should be made after school if at all possible but if unavoidable your daughter should bring her appointment card/letter to the Student Hub, or a phone call from a Parents/Carers to confirm before leaving. Any holidays taken during term time will count as unauthorised absences.

**ATTENDANCE RATE 2021/22
YEARS 7 - 11**

96.1%

**RATES OF AUTHORISED
ABSENCE**

3.6%

**RATES OF UNAUTHORISED
ABSENCE**

0.3%





Facilities

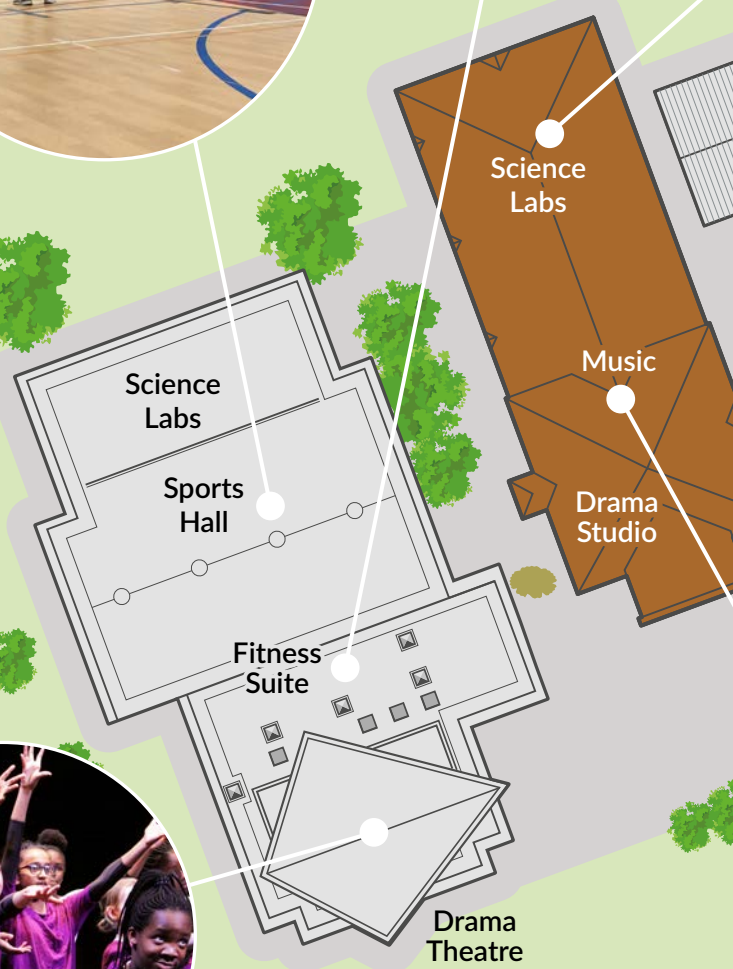
Constructed on a 17 acre site, the school's extensive grounds provide a pleasant environment as well as excellent sporting facilities and students benefit from up-to-date equipment in all areas of the curriculum.

The Music Technology Suite and the Recording Studio provide access to the latest technology while a modern professional theatre, photography facilities and dance studio give students the opportunity to explore and develop their creative potential. Additionally there are five Science laboratories, a fitness suite and a sports hall, complete with showers and changing rooms.

The Ada Lovelace Suite is made up of five spacious computing classrooms, a MacLab, a DT Design room and a conference room.

The computing facility illustrates the status of Computing at Townley. The facility allows our students to develop their passion for Computer Science and all things technology in an apt learning environment; as well as facilitating external events and training programmes.

The school's Dining Hall provides a variety of hot and cold food at breakfast, break, lunch-time and after school, as well as a Coffee Bar which serves freshly made sandwiches and snacks. The 'Piazza' and the 'Terrazza' provide a pleasant environment for students to eat lunch at the picnic tables or to meet friends. A snack shack called the Munchbox, provides sandwiches and drinks for those who do not wish to eat in the Dining Hall.



Tennis courts



Languages

English

Humanities

Maths

Library

6th Form Study Hall

Social Science

Art

Assembly Hall

Art

6th Form Centre

MacLab

Design Technology

Dining Hall
BYTES

Computer Studies

Ada Lovelace Suite



Sports Field



Twitter: @TownleyGrammar



Website: www.townleygrammar.org.uk



TOWNLEY

GLOBAL

Life at Townley does not stop at the end of the school day. Students take part in a large variety of trips and visits

Some of these trips are an important part of academic courses and occur during term time, but many are optional visits, sometimes during the school holidays. It is our belief that each trip provides a valuable experience that will help students develop essential skills including confidence, empathy, self-sufficiency and leadership. A typical term might include opportunities for students to participate in Duke of Edinburgh training, a visit to a European country to brush up on language skills, or a cultural exchange to Delhi, India.

In addition to the numerous opportunities for visits in the UK, an exciting and varied programme of trips takes our pupils across the globe to discover places of cultural, geographical and historical interest. During her time at Townley your daughter will have the opportunity to be involved in many of the following international experiences:

- Music trips
- German trips
- Spanish visit
- French exchange
- Indian exchange
- Chinese exchange
- Computing to Silicon Valley
- New York trip
- Argentina Exchange
- Science Exchange to Japan
- World Challenge (past visits have included Madagascar, Mongolia, Thailand and Costa Rica)

We believe in preparing students to be global citizens and coupled with our Global Learning Program we are confident that the opportunities your daughter will enjoy will contribute significantly to her educational experience.



Silicon Valley, USA



India



Japan



DoE Training



Argentina



San Francisco

Admission to Townley Grammar School

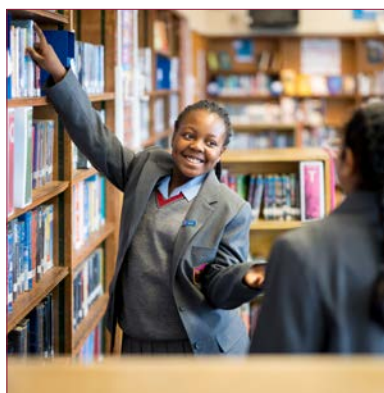
Entry to the school at 11+

Townley Grammar School became an Academy on 1st January 2012 and is therefore the admissions authority for the school. Townley Grammar School is a former maintained grammar school designated as such under section 104 of the School Standards and Framework Act 1998 and the Education (Grammar School Designation) Order 1998. As such it is permitted to continue to select its intake by reference to ability. Applications for Year 7 admission will be co-ordinated by the London Borough of Bexley.

In September 2004 the school was recognised by the DFES as a Specialist School for the Performing and Visual Arts and in 2008 we were re-designated as a High Performing Specialist School. Our second specialism in Mathematics and Computing began in September 2009.

The published admissions limit for September 2023 was 224. 232 first preferences for the school were received by Bexley London Borough. The admission limit for September 2024 is 224.

If places remain available at Townley Grammar School after all students "deemed selective" by the London Borough of Bexley have been offered places, the Governors will adopt the principles and process of the London Borough of Bexley's reserve list. Places will be offered to students in descending order of the aggregate score achieved in the Bexley selection test.



Current school roll is 1627



Entry to the school in years 8 – 11

The current procedure for in-year transfer is as follows:

Enquiries should be made to the school's Admissions Co-ordinator (Mrs Bradshaw-Smith).

Students can be admitted to Townley Grammar after the start of Year 7 if vacancies arise because, for example, other children leave the school. If you would like to apply for a place at Townley Grammar School for your daughter, you should complete the Grammar Schools of Bexley's Secondary In-Year Application Form or Bexley's Secondary In-Year Application Form, available from the school website or Bexley Local Authority website. Guidance notes are available to download from the school's website and from Bexley's website. You will be notified of the test arrangements for entry. If your daughter is deemed selective but a place is not available you will be able to request that she is placed on the waiting list.

The in year admissions process from 2023/2024 is as follows:

The policy applies to admissions from January of Year 7 to the beginning of Year 10. The school does not normally offer places after the beginning of Year 10 or in Year 11 – other than to students who have moved into the area and cannot continue to attend their previous school.

Townley Grammar School will participate in the Fair Access Protocol in Bexley and where required to do so will offer a place through that process ahead of any other applicant on the school's waiting list.

On receipt of an application from a student who has moved into the area and cannot continue to attend her previous school, Townley Grammar School will arrange a selection test. In this way the school seeks to support these applicants

with information about their daughter's possible suitability for a grammar school place. Where parents/carers wish to apply as a result of a change of address, which means that their daughter can no longer attend her current school, applications will be accepted no more than 6 weeks in advance of the move. If a place can be offered, the school will need to see evidence that the move has completed before the place can be taken up.

On any occasion when tests are held, the school will invite all those who have applied for places to sit the tests. Applicants who achieve the required standard in the test will be ranked according to oversubscription criteria 1 (LAC), 2 (Children attracting Pupil Premium who achieve the selective score), 3 (sibling), 4 (staff daughter) and 6 (distance) as stated in the school's Admission Policy. In the event that two or more applicants live at equal distance from the school the student with the highest aggregate score in the selection test will be offered the place. In the event that two or more students living at an equal distance from the school have the same aggregate score, random allocation will be used.

Students will be tested only once during any school year. The names of those achieving the required standard will be added to an in-year waiting list – kept in rank order as set out above.

Waiting lists will automatically update at the end of each academic year unless a parent/carers requests their daughter's name to be withdrawn from the waiting list.

Enquiries should be made to the School Admissions Co-ordinator Mrs Bradshaw-Smith:

Email: admissions@townleygrammar.org.uk

HOUSE SYSTEM

The classical Greek goddesses chosen as figureheads for each House represent specific positive qualities and values, which we would like to foster in students at Townley Grammar School.



AMBITION
COMPASSION
PRIDE IN WORK



COMPETITIVENESS
CONFIDENCE
INDEPENDENCE



ENTERPRISE
LOYALTY
KNOWLEDGE



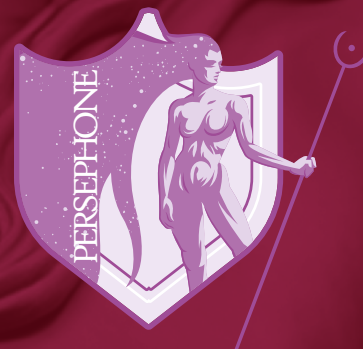
PERSEVERANCE
GENEROSITY
RESPONSIBILITY



EXCELLENCE
ELOQUENCE
SELF RESPECT



INDUSTRY
CHARITY
CONSIDERATION



CREATIVITY
FAIRNESS
ORIGINALITY



TOWNLEY

EST 1937

GRAMMAR SCHOOL

From here it's possible



Email: admin@townleygrammar.org.uk



Tel: 020 8304 8311



Twitter: @TownleyGrammar



Website: www.townleygrammar.org.uk



Address: Townley Grammar School, Townley Rd, Bexleyheath DA6 7AB