

**INFORMATION FOR
PARENTS/GUARDIANS**

**INTRODUCTION TO THE HOUSE
SYSTEM**

Introduction

Townley Grammar School is pleased to announce its new House System from the Autumn Term 2011.

The following booklet is designed to outline the ideas and concept behind the new System, as well as providing information regarding how the System will run on a day to day basis.

The Houses

From September 2011 each Townley Grammar student will be placed in a House, named after a classical Greek Goddess. The House Names will be:

Demeter, Hera, Hestia, Athene, Persephone, Artemis and Aphrodite.

Why does Townley Grammar School need a House System?

Townley Grammar School believes that by creating a House System we can:

- Foster personal and social qualities in students which will benefit and inspire them in their learning and life in general.
- Continue to create a positive and collaborative community.
- Provide an enjoyable selection of competitive activities throughout the year with principal events in Music, Drama and Sport.
- Develop team work by allowing students to work with students in other year groups and classes.
- Promote leadership opportunities for students at any age.

How will the System work?

The System will work on a vertical structure, to compliment the horizontal year groups. For example 7.1, 8.1, 9.1, 10.1 upwards will form one House, 7.1, 7.2 etc another. Each House therefore will have student members from each Year Group 7 – 13. This allows students to work alongside peers and friends across all years in the school. Current 6th Form Students will be allocated by forms to the Houses and Year 11 students will stay in the same Houses when they move into the 6th Form. External students joining the 6th Form will be allocated a House.

Your son/daughter will be finding out what House they will be in during early September 2011.

Head of Houses

Each House will be headed up by a member of staff. For 2011-2012 the Heads of Houses are as follows:

House	Head of House	House Colour
Demeter	Miss B Cupid	Green
Hera	Mrs M Franz	Yellow
Hestia	Mrs C White	Orange
Athene	Mr G Giles	Blue
Persephone	Mrs L Macdonald	Purple
Artemis	Mrs J Gill- Worrton	White
Aphrodite	Mr J Lines	Red

House Captains

Each House will also have a House Captain and Deputy Captain from the 6th Form, whose duties will include preparing and delivering House Assemblies, administration and the maintaining of the House notices boards. Over the coming year the Hall will also become an area for House Emblem display.

Will Townley Grammar be using House Points or remaining with Merits?

Townley Grammar will keep the same merit system but in addition to students' personal accumulation merits will now go towards the House total. We will now refer to the System as House Points.

House Points will be recognised for achievement, attitude, arts and sporting events, public speaking, debating, charity fundraising, extracurricular work and examples of positive behaviour around the school. For example

Sports

Category	Examples
Sporting achievement	'woman of the match', progress in a sport, winning a race etc
Sporting commitment	Attending every fixture, mentoring younger students, assisting with events etc

Community

Category	Examples
Environmental	Running a 'litter patrol', looking after the pond / outside areas, improving the environment, organising recycling teams etc. We Could also award points for healthy living – cycling to school etc
Extra curricular	Taking part in / showing commitment to extra curricular clubs and events, assisting with the running of events and clubs.
Helpfulness	Helping a teacher with class activities, helping other students in any way (assisting in homework clubs etc)
Community Spirit	Things students do that show us they are proud to be a Townley student; exemplary uniform, active role in school council, volunteering for events, helping visitors etc.
Outside achievements	Winning awards outside school, voluntary work etc

Arts & Drama

Category	Examples
Arts & Drama achievement	Excellent performance, pieces of work, progress in arts etc
Arts & Drama commitment	Attendance at clubs , mentoring younger students, assisting with events etc

Recording House Points

House Points will be recorded in the same way as merits, in the student planner. The only difference is that we have provided four codes to utilise to enable Heads of House to monitor what their House is excelling in.

Charity Links

As part of our commitment to the local community we will also be supporting seven **local** charities in the area. During the school year each House will host one charity event to raise money for their particular charity. If students wish to fundraise for other charities, they can still do so throughout the academic year. We have identified some key charities; however we are still looking to support a selection of others. If you have a particular charity you believe should receive support please contact Mrs Macdonald at admin@townleygrammar.org.uk.

Please note we are looking to help support local charities to Bexley and the surrounding areas.

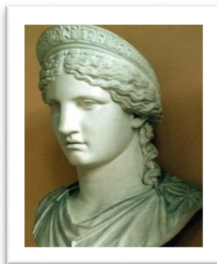
Why are the Houses named after Greek Goddesses?

The classical Greek goddesses chosen as figureheads for each House represent specific positive qualities and values which we would like to foster in our students. By the time our students leave Townley we hope they will be in possession of all those social and personal qualities tabulated below. These goddesses originate in Greek mythology and their characters and careers are the stuff of powerful, exciting and intriguing narratives; these stories will allow students to explore the significance of their House values within a context which is both educational and thoroughly entertaining.



Demeter is the goddess of rebirth and renewal, especially within the context of harvest and the seasons. Her qualities include generosity, responsibility and perseverance. She taught mankind the art of sowing and ploughing. When her daughter, Persephone was abducted by Hades, King of the Underworld; she wandered the earth in search for her and because of this, the earth bore no grain for a few months. (see Persephone for more details)

Demeter



Hera is queen of the Olympian gods. Her qualities include excellence, eloquence and self respect. She was predominately the goddess of marriage and birth. She was also Queen of the Olympian deities, being the wife and sister of Zeus. Various accounts hold Hera as jealous of Zeus's many affairs, leading her to punish rivals and their children.

Hera



Hestia is the goddess of the hearth fire, representing the importance of home and family. Her foremost qualities are charity, consideration for others and industry. She had no throne, choosing instead to tend to the sacred fire in Olympus. She vowed on her brother Zeus's head to remain a virgin goddess, despite Apollo and Poseidon attempting to woo her.

Hestia



Athene

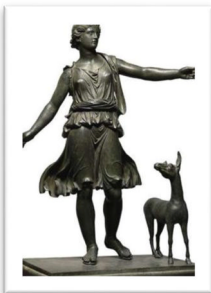
Athene is the goddess of wisdom. Her qualities include loyalty, knowledge and enterprise. The favourite child of Zeus was goddess of war, music, the arts, industry and justice amongst others. She challenged her uncle Poseidon to claim their favourite city, with the competition to see who could provide the best gift. Poseidon provided a spring, however the water was as salty as the sea – but Athena gave the gift of the Olive tree which provided food and oil for the people – and so the city was named Athens.



Persephone

Persephone is queen of the underworld. Her qualities include fairness, originality and creativity. She was the daughter of Demeter and the goddess of the Underworld. She was abducted by Hades, King of the Underworld as she was collecting flowers one day. Demeter was so distraught at her daughters disappearance that she wandered the earth for her, and when she found she had been taken by Hades became a recluse, resulting in the earth becoming infertile and desolate.

Seeing the effect her disappearance had on the earth, Zeus commanded Hades to release Persephone. Hades agreed but not before giving Persephone a pomegranate to eat which then bound her to the underworld. She was able to return to earth for three months of the year to be with her mother, providing the story for the changing of the seasons.



Artemis

Artemis is the goddess of the hunt and the moon. Her qualities include confidence, independence and competitiveness. She is the daughter of Zeus and the twin of Apollo. She is the goddess for the wilderness, hunting, wild animals, fertility and the moon. Similarly to Hestia, she remained a virgin goddess. She was armed with a bow and arrow, and was a goddess of contradictions- being both a guardian of wild animals and hunter and protector of children who could also bring sudden disease and death.



Aphrodite

Aphrodite is the goddess of love and beauty. Her qualities include pride in work, ambition and compassion. One of the most well known goddesses, Aphrodite was a goddess of love, beauty and pleasure. It is said she born of the foam of the sea after the dismembered parts of Uranus were thrown in. Although being a goddess of grace and beauty she would often punish those who did not recognise this.

Assemblies and 'House Buddy System'

House Assemblies will occur once a term and will run across two weeks. We have split the assemblies across two weeks to ensure each House can meet in one of our large halls comfortably. To compliment this and to encourage the students to mix beyond their forms, we will be creating a 'House Buddy System' which will take place when students are not in their assembly.

Assemblies

- Each House will have one assembly a term during P.D sessions and will contain information, news, presentations and House Point totals for that term so far. These assemblies will led by the House Captains with Supervision from the Head of House.

House Buddy System.

The House Buddy System will involve individual students being paired up with another student in their House from another year. Although the supervised sessions take place formally once a term, we hope that the System would develop into real friendships beyond Year groups which will be reinforced by House events and competitions. The Buddy pairing would work as follows:

- **Year 7 and 8:** Year 8 House Buddies could help with transition period, advising them on the school and operating as a 'Big Sister'.
- **Year 9 and 11:** Year 11 students can advise Year 9 Students on preparing for GCSE's and what life is like in Year10/11.
- **Year 10 and 12:** Year 12 can advise the Year 10's about the transition from Year 10/11 to 6th Form and provide support and advice through GCSE stages.
- **Year 13** will be distributed amongst other forms to provide an extra support.

Identification

We will be looking into the costing for enabling each student to have a small coloured pin badge to denote which House they are a member of. It is hoped that the creation of emblems will help students create an identity for their own House.

Formal Launch of the House System

The House System will slowly be brought in during September 2011 through assemblies, bulletins and presentations. Form Tutors will be given information to present to their students so your son/daughter will have all information provided for them.

We will be holding an off timetable 'ACT Day' on Friday 14th October 2011 to formally kick off the House System. The event will be broken down into activities that explore the key themes, ideas and the Classical Greek Figureheads for the System. It is also our intention to allow students to view and express their opinions regarding the House System to allow us to respond to the Student Voice.

The House System is an exciting step forward for Townley Grammar School, providing a platform for communication across the wider school community. We hope this document has answered the questions you may have about the House System and would gladly like to hear your feedback, ideas and questions.

Please do get in contact with the school if you have any further queries.

The Heads of Houses and the House System Committee.